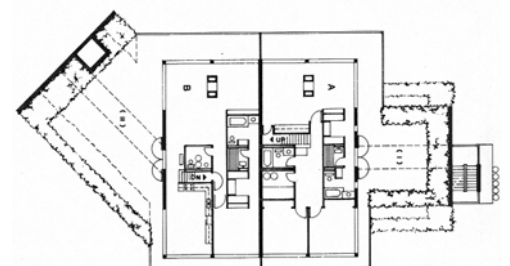
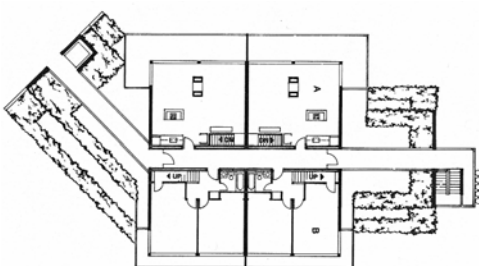
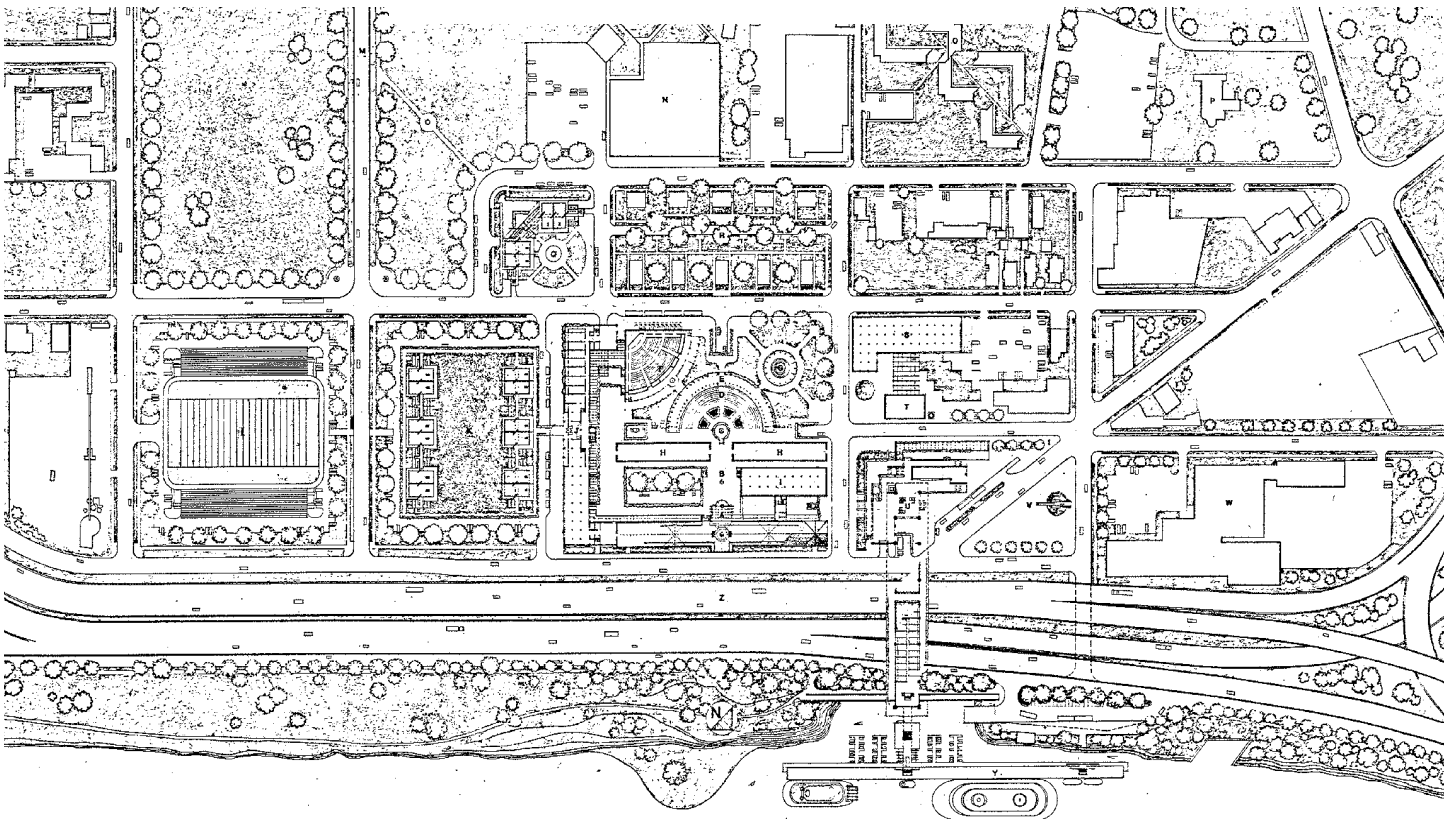
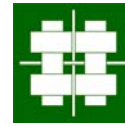


COLT ARMORY PARK • Hartford, Connecticut

a 320 acre national landmark restoration and mixed-use urban redevelopment plan designed by Phillip Lehn for Ahmed Dadi's Total Development Corporation to help revitalize downtown Hartford. To preserve and help humanize one of the world's most formidable arsenals and worker communities, the lively plan restored and transformed the industrial complex of brick and concrete framed buildings and open spaces that served the nation from the Civil War through World War II as an active urban park, public market, shops, offices, restaurants, theaters, housing, and a hotel with a bridge and tunnel across the freeway and dike to connect the new community to the Connecticut riverfront.



COLT ARMORY PARK TOWNHOUSES & TOWER CONDOMINIUMS • Unique, skip-loaded corridor floor plans that give each two story dwelling 180° views, cross ventilation, and a private, garden view terrace.

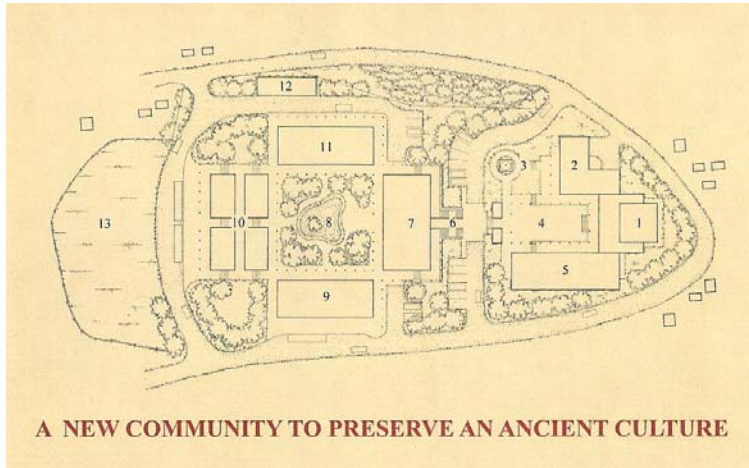
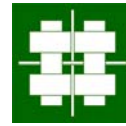


WACCABUC HILLS
Lewisboro, NY

A new town for 12,000 people of mixed ages and incomes located 35 miles from Manhattan was the largest of several communities designed by Phillip Lehn for Callister, Payne, and Bischoff's east coast office. Each of the award winning firm's many community designs incorporated several innovative, resource conserving, and ultimately very popular ideas including: fewer, narrower, and less intrusive roads located around the community's periphery, clustered housing, collective 'car barns,' foot, bike, and horse paths, generously landscaped common open spaces and facilities, and more spirited architecture based on regional archetypes using native, healthy, and natural materials.



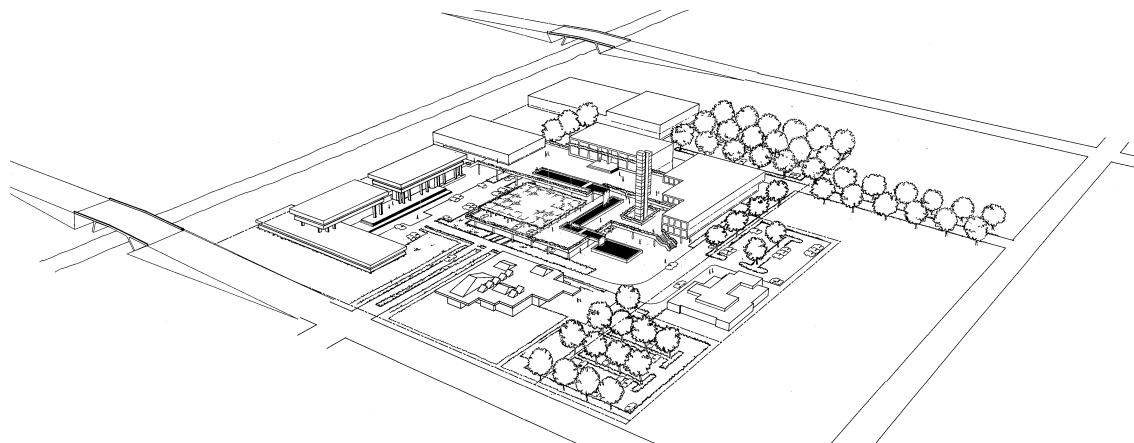
Streams and canals interconnect neighborhoods through parkways to commercial centers located along the banks of larger ponds and lakes. While a severe recession intervened to prevent its realization, Waccabuc Hills' successful design and approved development permits were appealed to the New York State Supreme Court where they were ultimately sustained and thereby helped to abolish exclusionary zoning throughout the state.



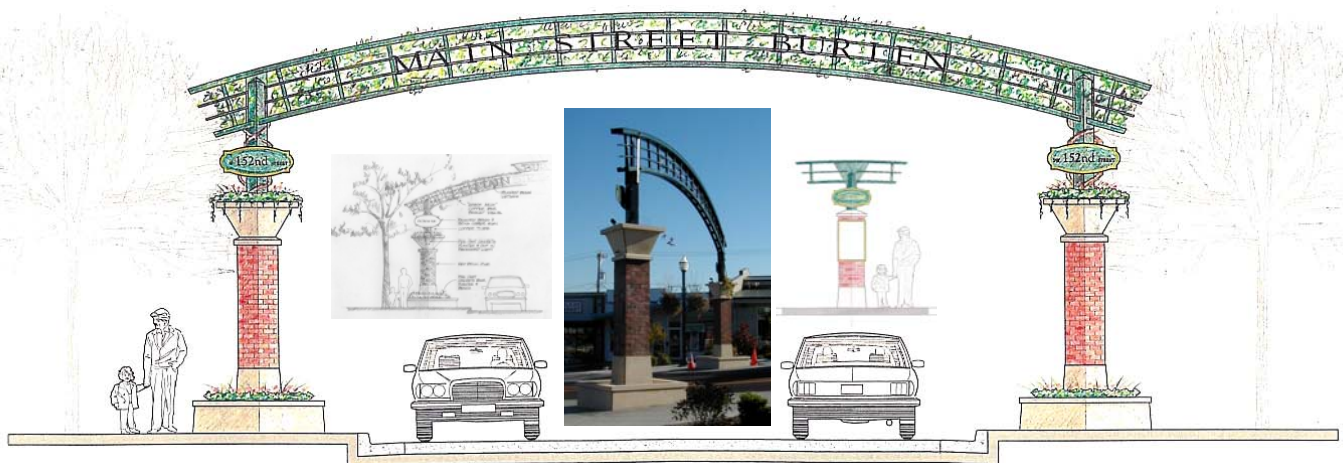
- LEGEND**
1. Monastery
 2. Sakya Family Residence
 3. Memorial Stupa
 4. Monastic Dormitory
 5. Inner Courtyard
 6. Bridge / Gateway
 7. 1st Level: Café, Shops, Kitchen & Storage
 2nd Level: Banquet Hall
 3rd Level: Guest Residences
 8. Garden Courtyard
 9. School (Nursery through High School).
 10. 1st Level: Cultural Arts Studios
 2nd Level: Multi-purpose Assembly Hall
 3rd Level: Library / Museum
 11. 1st Level: Health Clinic & Common Areas
 2nd Level: Senior Residences
 3rd Level: Senior Residences
 12. Garage / Storage
 13. Playfield / Public Parking



SAKYA INSTITUTE ✪ INDIA • A plan for a new community near Kalimpong, India designed by Phillip Lehn to help preserve the Sakya - Khön lineage's unique traditions of Tibetan Buddhism



REDMOND CIVIC CENTER • 1st Place, Civic Center Competition - Redmond, WA
 designed by Phillip Lehn for Arai / Jackson - Seattle, WA



SW 152ND STREET ENHANCEMENT PROJECT • Gateway and kiosk street enhancements - Burien, WA
 designed by Phillip Lehn for KPG - Seattle, WA