

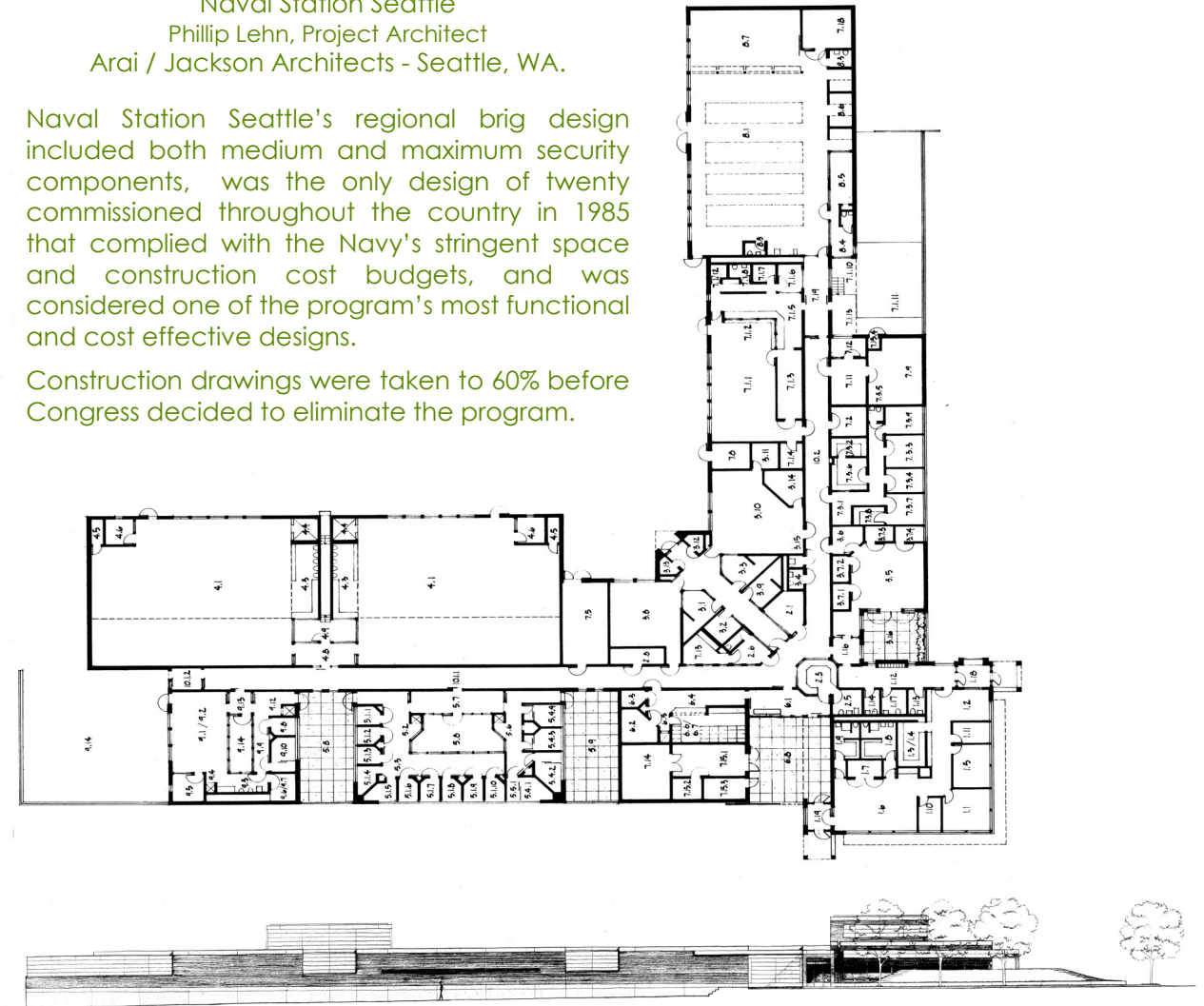


UNITED STATES NAVY REGIONAL BRIG

Naval Station Seattle
Phillip Lehn, Project Architect
Arai / Jackson Architects - Seattle, WA.

Naval Station Seattle's regional brig design included both medium and maximum security components, was the only design of twenty commissioned throughout the country in 1985 that complied with the Navy's stringent space and construction cost budgets, and was considered one of the program's most functional and cost effective designs.

Construction drawings were taken to 60% before Congress decided to eliminate the program.



UNITED STATES NAVY LCAC BASE

Camp Pendleton, CA
Philip Lehn, Construction Drawings for TRA
Seattle, WA

